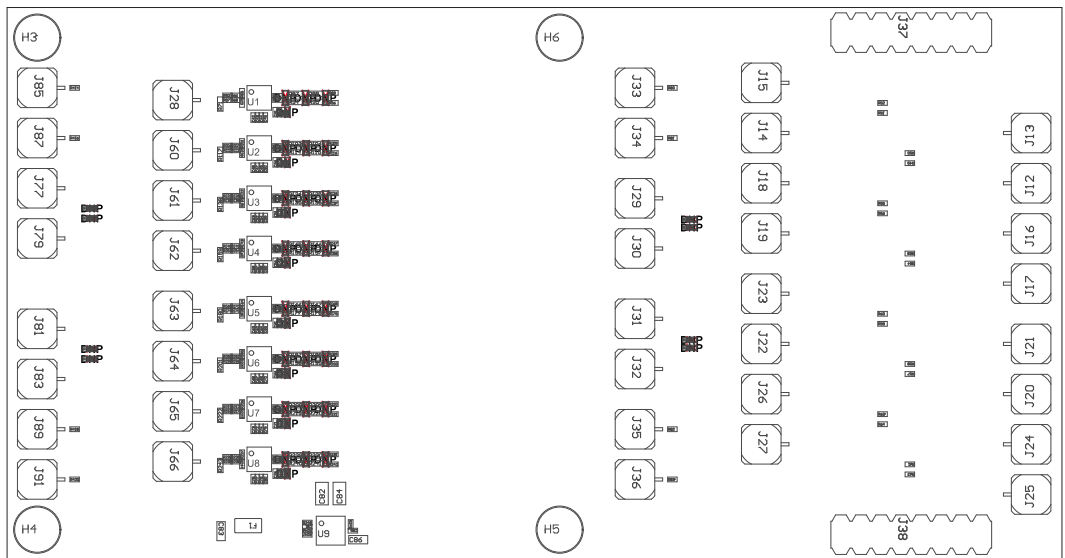
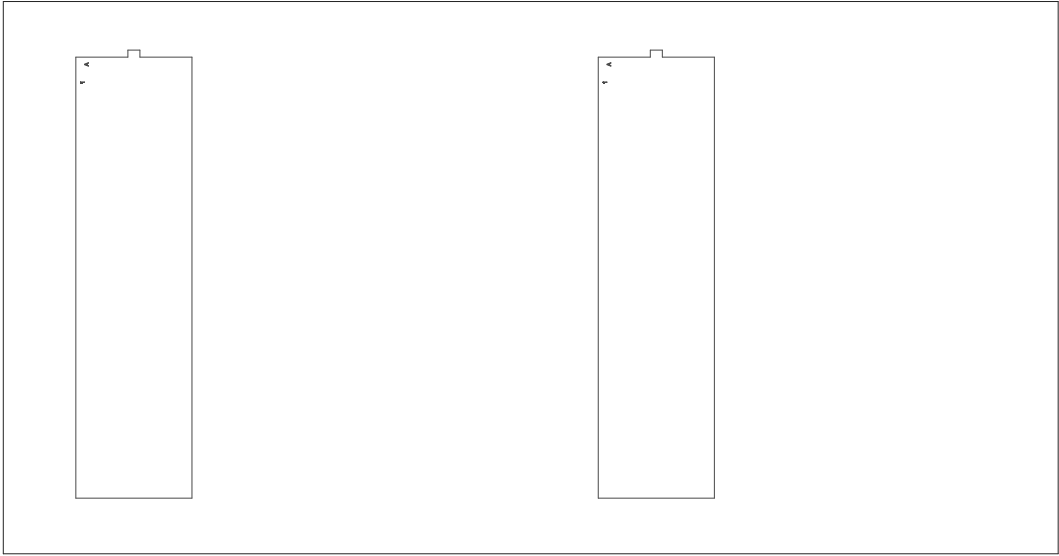


223 ■ These assemblies must be clean and free from flux and all contaminants. Use of no clean flux is not acceptable.  
221 ■ Install label in silkscreened box after final wash. Text shall be 8 pt font. Text shall be per the Label Table in the PDF schematic.  
224 ■ These assemblies must comply with workmanship standards IPC-A-610 Class 2, unless otherwise specified.  
222 ■ These assemblies are ESD sensitive, ESD precautions shall be observed.



COMPONENTS MARKED 'DNP' SHOULD NOT BE POPULATED.  
ASSEMBLY VARIANT: Standard BOM

PCB VIEWED FROM TOP SIDE			
BOARD #: N/A		REV: E1	SUN REV: Not In VersionControl
PLOT NAME = N/A			
GENERATED : 12/23/2010 3:35:10 PM			TEXAS INSTRUMENTS



COMPONENTS MARKED 'DNP' SHOULD NOT BE POPULATED.  
ASSEMBLY VARIANT: Standard BOM

PCB VIEWED FROM BOTTOM SIDE		Not In Version Control BOARD #: N/A	REV: E1	SUN REV:
PLOT NAME = N/A		TEXAS INSTRUMENTS GENERATED : 12/23/2019 3:35:19 PM		